

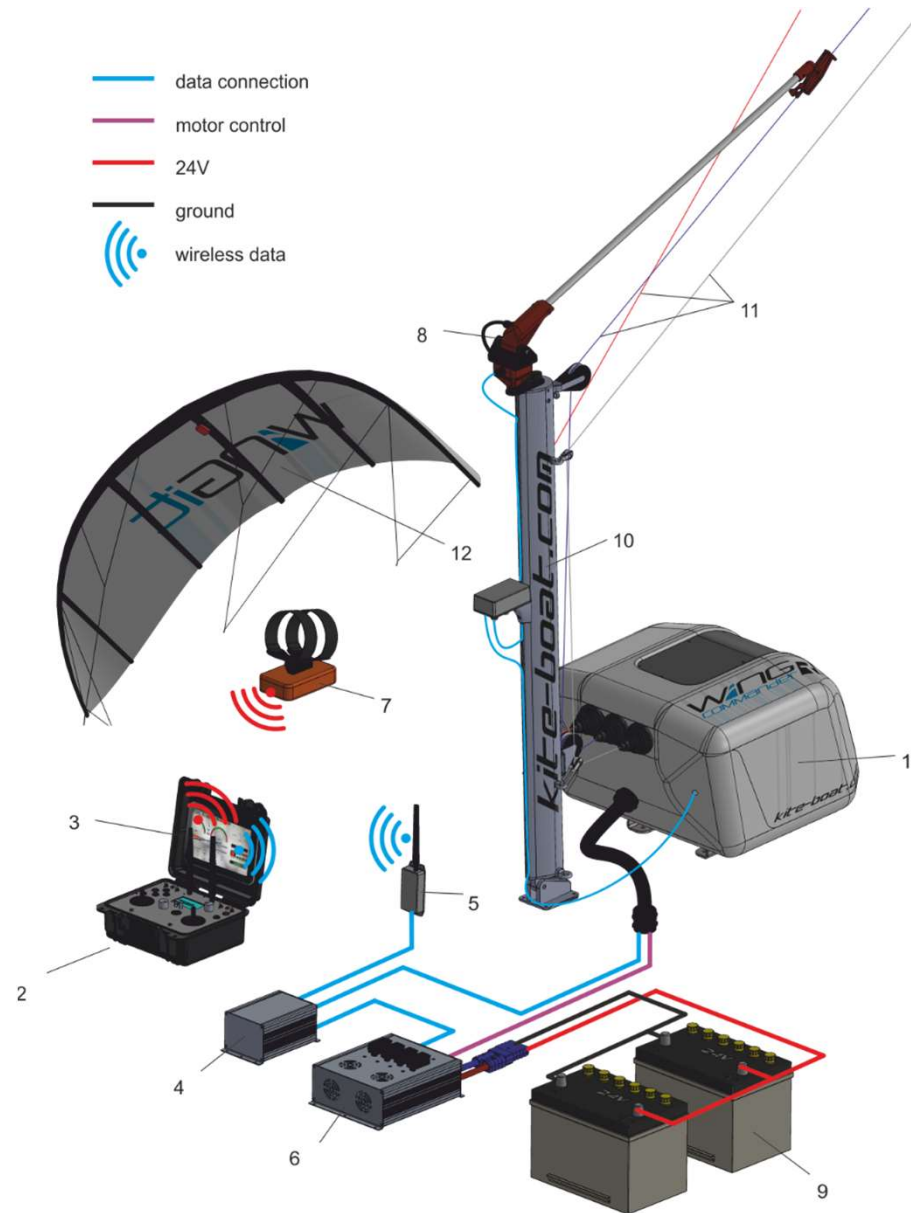
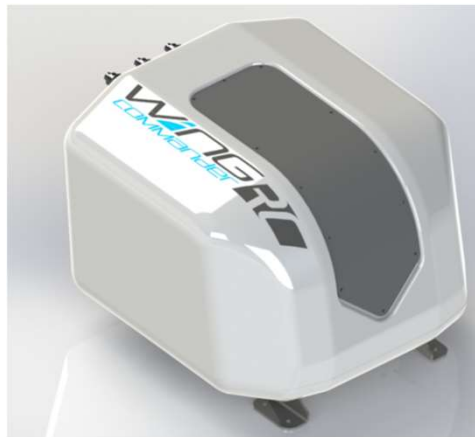


Kite propulsion systems
for Cora48

WINGit

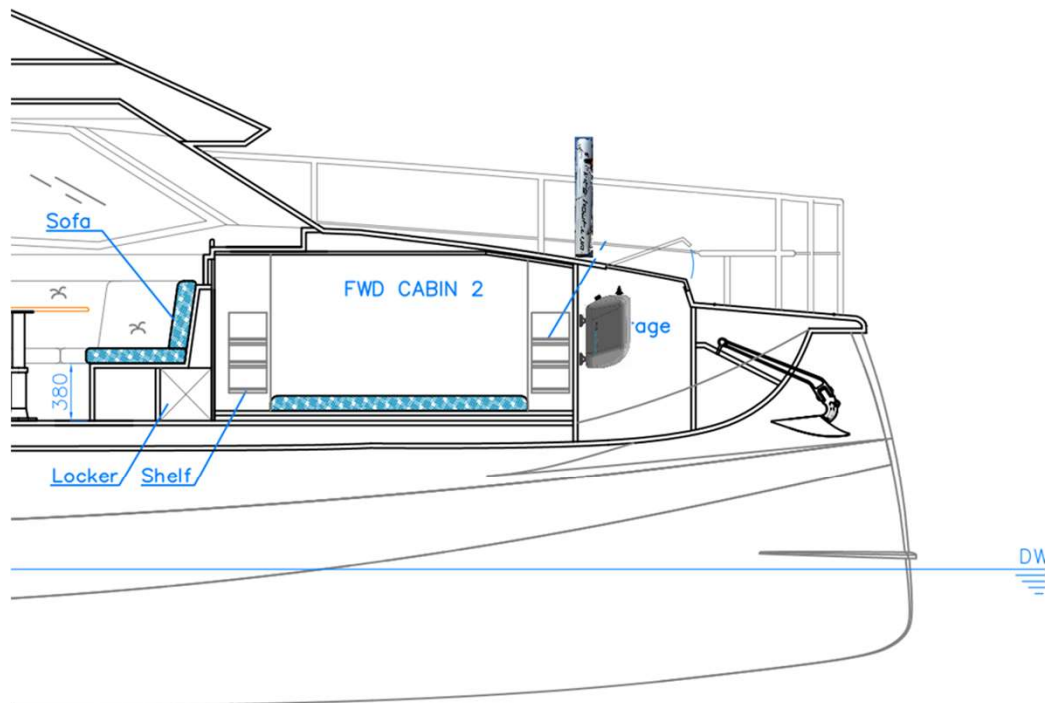
kite-boat-systems

System component



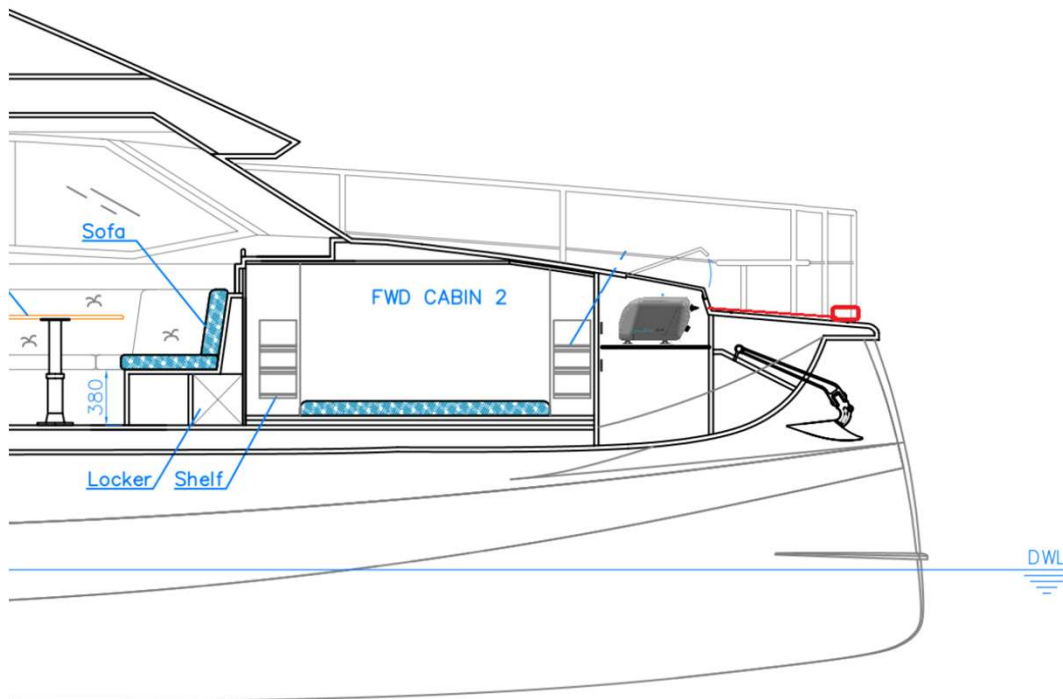
Installation Options – Version 1.

- Winch below deck
- With removable mast

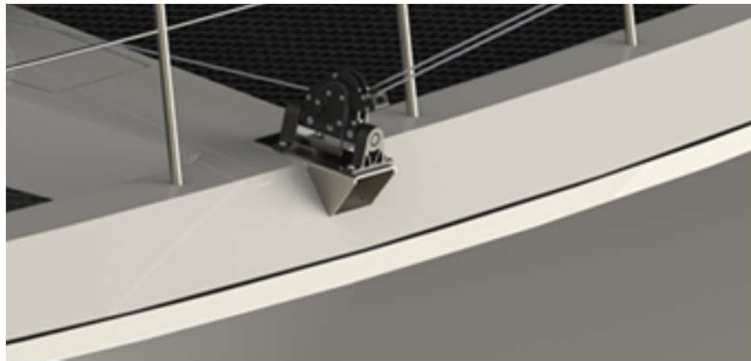


Installation Options – Version 2.

- Winch below deck
(can be also install with out cover)
- Line sensor fix on the bow



Installation with decks sensor



The deck mount sensor can be used if the deck is higher than the railing or there is a point to mount the line sensor in front of the railing. There are also ways to combine deck mount sensor with a winch mounted below deck.



WINGit

kite-boat-systems

Landing:

Bringing the Kite In:

The winch operator carefully begins to retract the kite, gradually reducing the length of the launch line. As the kite approaches a distance of approximately 20 meters from the yacht, it begins to descend towards the water's surface.

Water Landing:

With the kite positioned just above the water, the winch operator continues to reel it in until it gently touches down onto the surface. The kite is then secured to the winch system, ready to be safely pulled back on board.

Retrieval:

Using the winch, the kite is steadily pulled back on board the yacht, where it can be stowed away securely until the next use.





WINGit
kite-boat-systems

Dresden | Germany
info@kite-boat-systems.com
www.kite-boat.com