



Kite propulsion systems  
for Cora48 Yachts



Who are we!

- The world's only serial manufacturer of automated kite propulsion systems for yachts up to 25m in length
- Successful market launch in 2015 of the WingCommander RC as an automated kite control system after 10 years of development
- World record of crossing the Atlantic only with a WINGit kite system
- Cooperation with well-known manufacturers for solar yachts





## History

For more than 10 years, Stephan Schröder and his team have been developing the world first automatic flying kite Control Systems for boat propulsion. What once started with small beach catamarans and sporting competitions has grown into one of the most innovative and sustainable products in the maritime field.

The product WingCommander RC is a milestone in the development of alternative propulsion technologies for pleasure yachts.







## Manufacturer

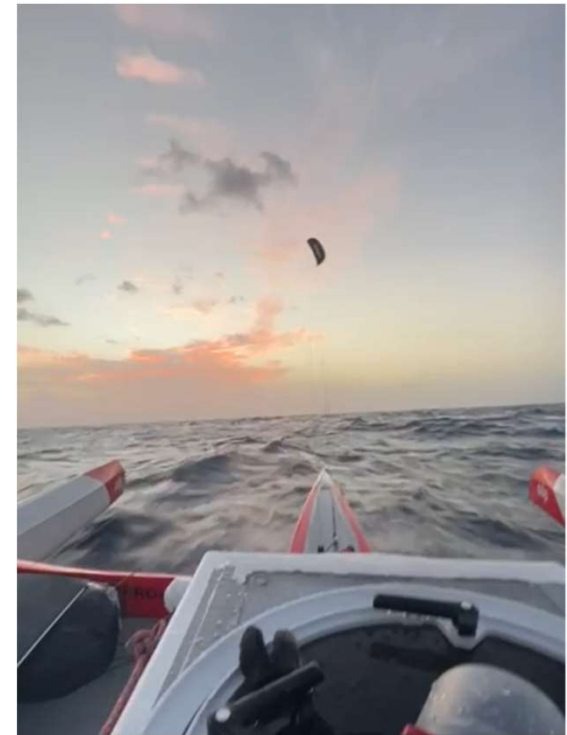
Our manufactory is located in Dresden | Saxony | Germany. All our systems are handcrafted in-house. The development of our systems, including the control software, is carried out directly by WINGit.





## World record with WINGit!

Francisco Lufinha crossed the Atlantic on a trimaran equipped with a WingCommander system from WINGit, which was pulled solely by kite. The Portuguese sportsman had a mission: a solo crossing of the Atlantic in a boat powered entirely by kite. And he did it! In a world-beating time of 21 days and this only with our system!





## Customer | References

World-renowned shipyards use our innovative WINGit kite system for his yachts.

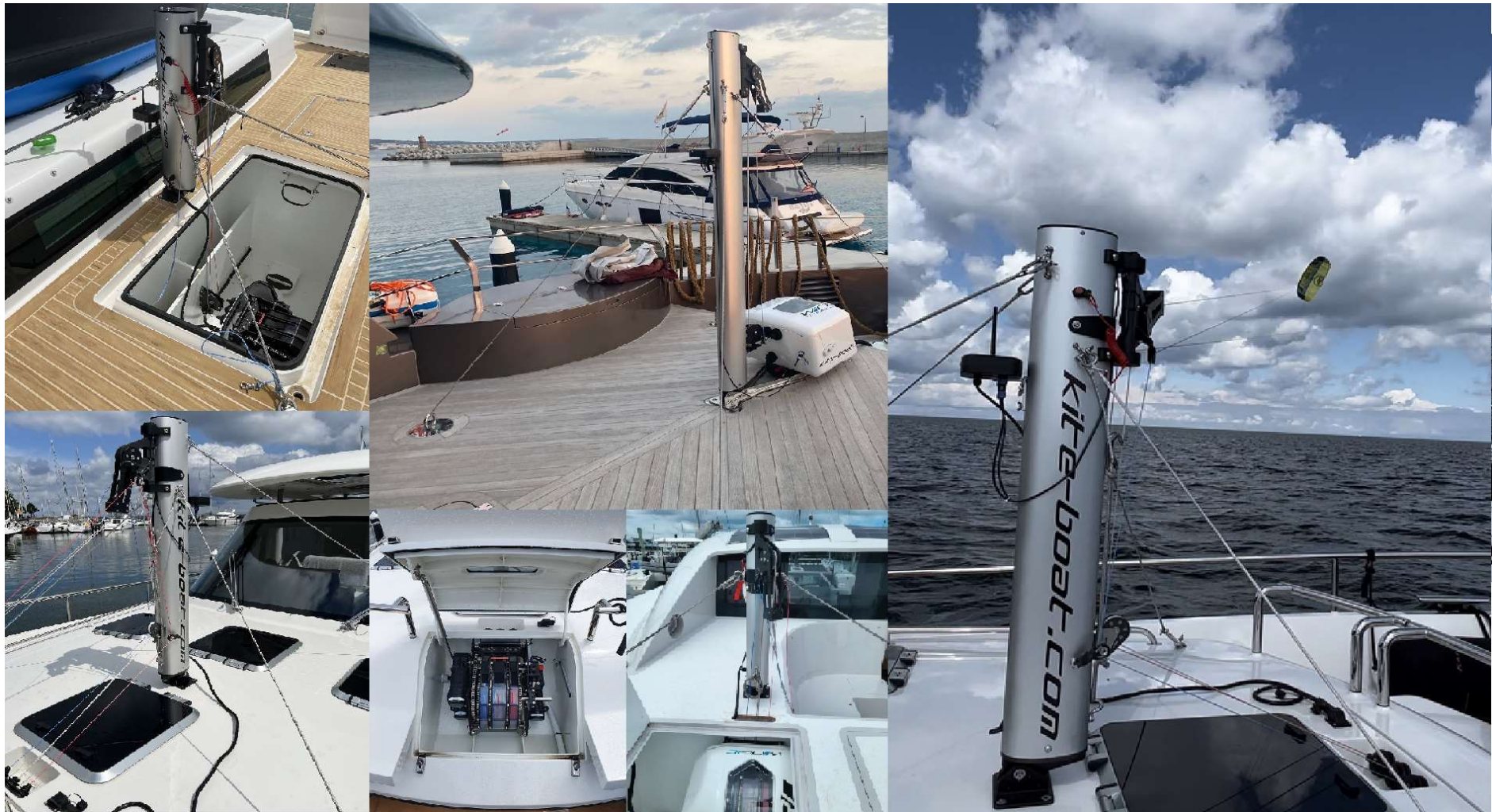




# WINGit

*kite-boat-systems*

## Projects





## Advantages for the owner:

- Extended Range:

With Wingit Kite System, your boat can reach new horizons. Experience the freedom of exploring distant shores and hidden gems with confidence, thanks to our advanced kite propulsion technology.

- Reduced CO2 Emissions:

Sustainability meets luxury with WINGit. By harnessing the power of the wind, our system significantly reduces carbon emissions, minimizing your environmental impact while maximizing your enjoyment on the water.

- Enhanced Safety Features:

Your safety is our top priority. With built-in safety features, including emergency propulsion in the event of a power failure, Wingit Kite System ensures peace of mind for you and your crew on every voyage.



## Installation Options



Mast with rigging lines and winch on deck. Mast and rigging lines can easily mounted and removed in few minutes. Winch needs to stay in place.



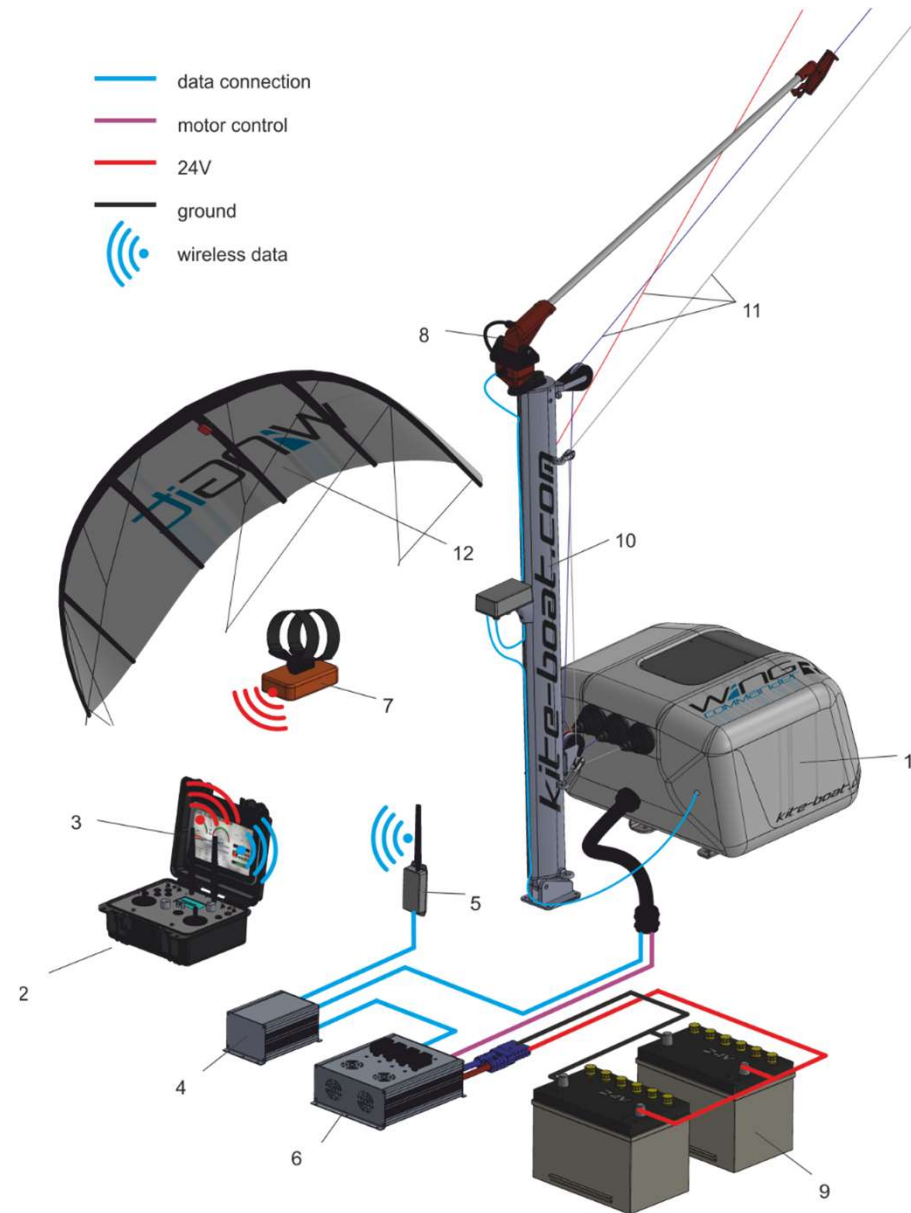
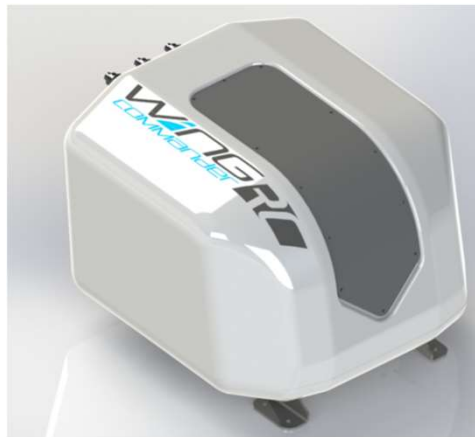
Rigging mast and winch below deck. This is a very common way of mounting on new build boats as the shipyard can prepare a compartment for the inch and mast storage. Mast can be mounted when needed.



The deck mount sensor can be used if the deck is higher than the railing or there is a point to mount the line sensor in front of the railing.

There are also ways to combine deck mount sensor with a winch mounted below deck.

## System components





## Easy handling

Experience the ease and simplicity of kite propulsion with our state-of-the-art system. Whether you're a seasoned sailor or new to the world of yachting, our system makes sailing a breeze. With minimal training, even novice sailors can master the art of kite sailing, thanks to our user-friendly interface. Our system also features real-time monitoring and feedback, allowing you to stay informed about the status of the kite and make adjustments as needed. Once the kite is deployed and set to the desired position, our automated controls take over, maintaining optimal performance while you sit back and enjoy the ride. Safety is paramount on the open sea. That's why our kite system is equipped with advanced **safety features**, including automated controls and emergency deployment systems, ensuring peace of mind for you and your crew.







## Launch and Landing Procedure:

### *Launch:*

#### Preparation:

The kite propulsion system is prepared for launch on the yacht's deck. The kite is securely attached to the launch line, ready to be deployed.

#### Launching the Kite:

With the yacht stationary in the water, the kite is gently released onto the surface, approximately 30 meters from the yacht. This ensures that the kite has enough space to catch the wind and gain altitude.

#### Remote Control Activation:

Using the remote control, the operator initiates the launch sequence. The kite's ascent is carefully controlled, gradually reaching a distance of approximately 100-150 meters from the yacht.





### *Landing:*

#### Bringing the Kite In:

The winch operator carefully begins to retract the kite, gradually reducing the length of the launch line. As the kite approaches a distance of approximately 20 meters from the yacht, it begins to descend towards the water's surface.

#### Water Landing:

With the kite positioned just above the water, the winch operator continues to reel it in until it gently touches down onto the surface. The kite is then secured to the winch system, ready to be safely pulled back on board.

#### Retrieval:

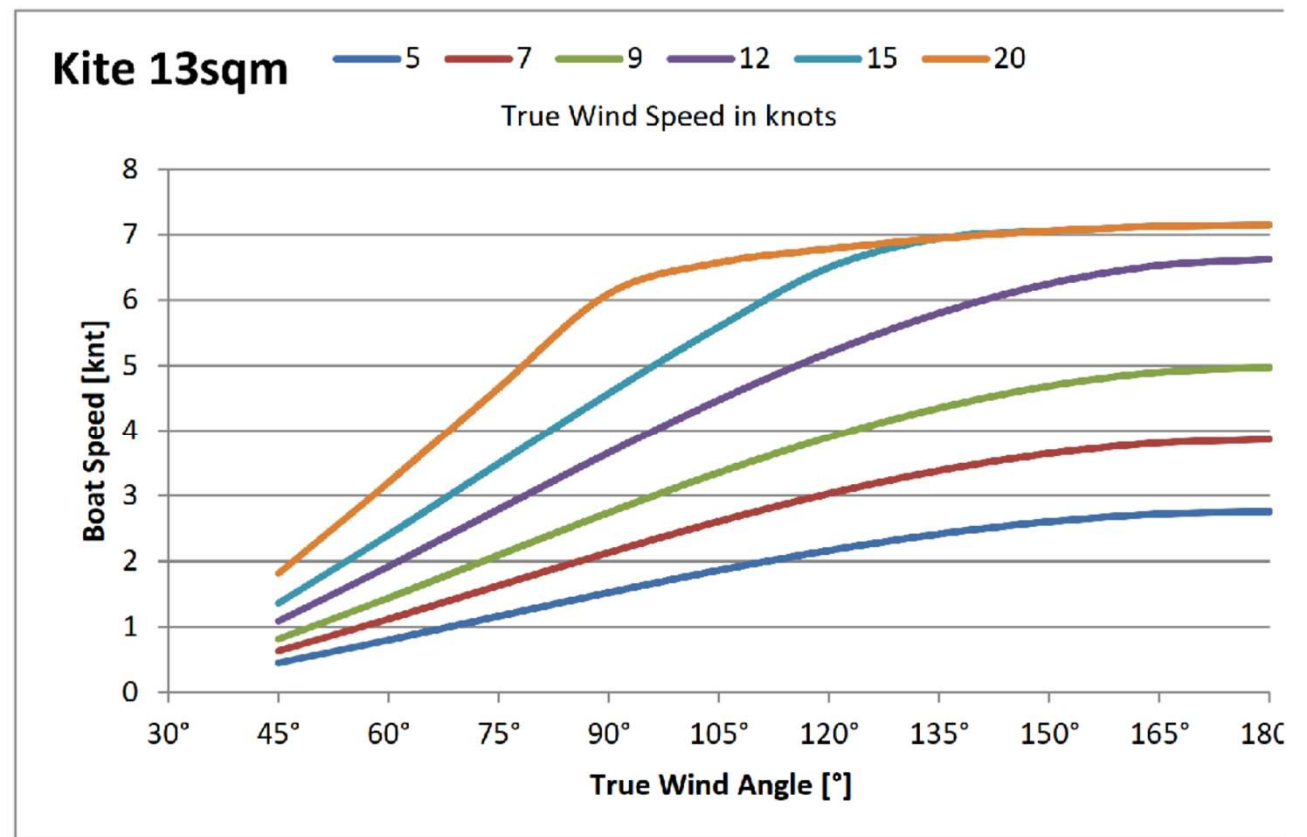
Using the winch, the kite is steadily pulled back on board the yacht, where it can be stowed away securely until the next use.



[https://www.youtube.com/watch?v=iKBqq\\_9RK5g](https://www.youtube.com/watch?v=iKBqq_9RK5g)

## Speed calculation catamaran

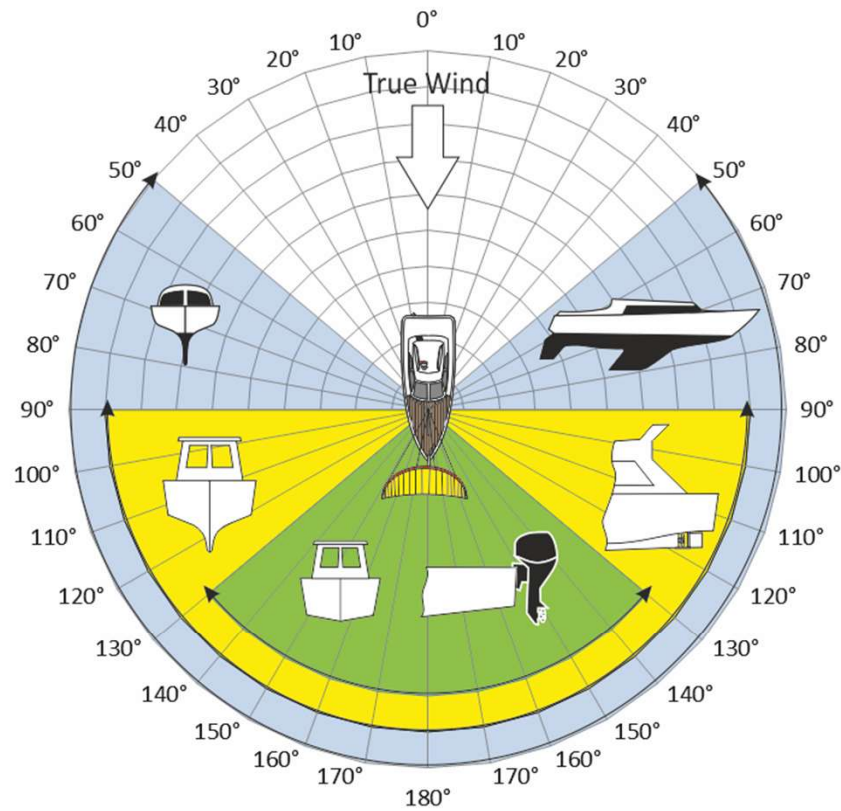
Length Waterline: 48 ft  
Displacement: 24 t  
Kitesize: 13 sqm



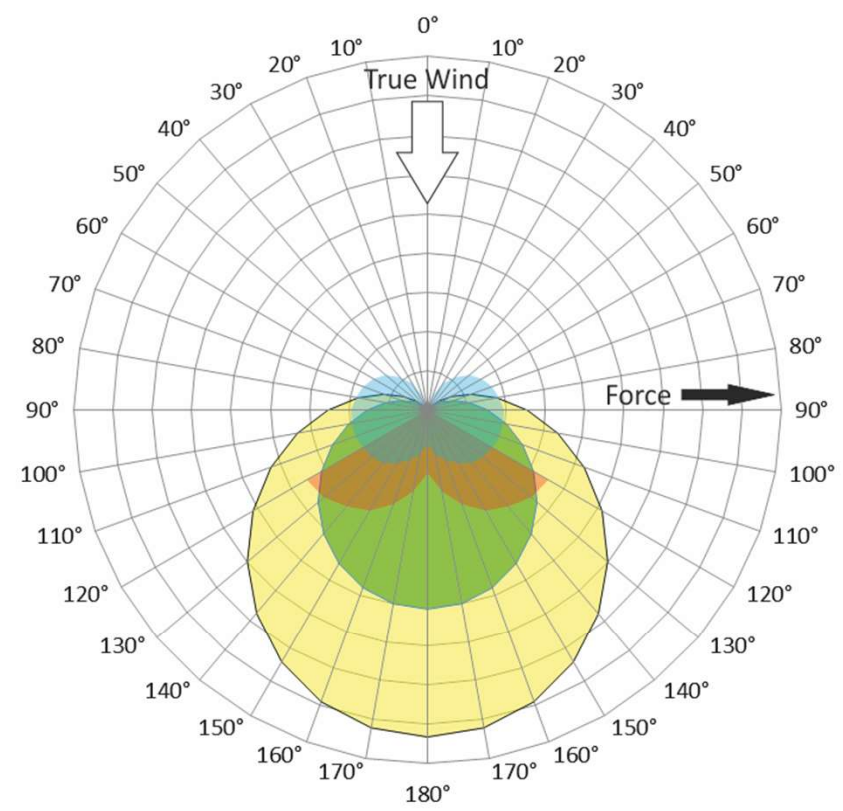


## Kite propulsion performance

### Forces: Kite vs. Sail\*



■ Sail ■ Keel ■ Flat



■ Kite 15m<sup>2</sup> at altitude 50m ■ Kite 15qm at altitude 10m  
 ■ Sail 45m<sup>2</sup> + Spi 70m<sup>2</sup>, ■ Sail 45m<sup>2</sup>



Start your journey into the future of yachting today and enjoy every moment on board your yacht like never before. With our cutting-edge propulsion system, the possibilities are endless.



Contact us now to learn more and take the first step towards a new era of yachting excellence.  
Fair winds and smooth sailing await!



**WINGit**  
*kite-boat-systems*

Dresden | Germany  
[info@kite-boat-systems.com](mailto:info@kite-boat-systems.com)  
[www.kite-boat.com](http://www.kite-boat.com)