



## HIGH QUALITY PRODUCTION OF **OEM YACHTS** AND OTHER VESSELS

- Perfect location at the seafront, near 2 deep sea ports
- Highly skilled, marine educated workforce
- Modern, well equipped facilities
- Close to motorway and 2 international airports





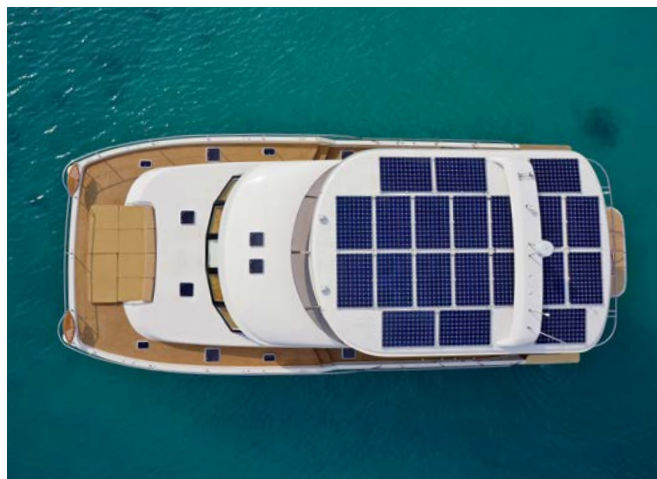
## WHO WE ARE

PMG Shipyard was established in Thailand by Swiss national Philippe Guénat in 2004.

We relocated to our current yard in Rayong in 2014. For many years, there was a smaller shipyard at the location, but we have invested heavily in refurbishing the buildings, adding more production halls, and installing new, modern machinery to be able to build yachts to the highest specifications.

Our management and technical staff have been recruited from across the globe, while our production staff is mostly local, consisting of educated, skilled marine boat builders, professionals with many years of experience. The total number of employees is nearing 100.

There are eight production halls, four of which are 50 x 12 metres in size with a ceiling height of 12 metres. In addition, there is a CNC room and separate workshops for carpentry, steel works, and upholstery. The shipyard has a total area of 20,000 square metres.



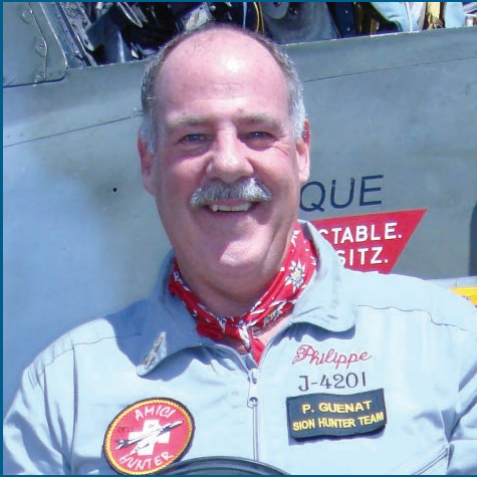
## WHAT WE DO

Although we can build many types of boats, our specialty is large catamarans, and the size of our facilities allows us to have several yachts of up to 80' length in production simultaneously. Our test pool, travel lift and launch vehicle are all dimensioned for yachts up to that size. Our launch ramp allows vessels up to 160 tons. We build longer series of yachts for corporate customers, but we also do custom builds up to 120' as well as refitting.

We have extensive experience with electrically powered and solar assisted yachts, and have built several solar e-powered vessels for leading European, American and New Zealand brands.

In addition, we build sailing yachts and diesel powered commercial or military vessels. PMG Shipyard is licensed to build under BOI (duty and tax exempt) conditions.





## ABOUT PHILIPPE GUÉNAT

Passionate yachtsman and aircraft pilot Philippe spent his childhood on the shores of Lake Geneva not far from the Family shipyard Corsier Port, established in 1909.

He soon learned about the joys of yacht racing as well as navigating on the high seas. His vocation as a hotelier and his attraction to tourism have taken him as far as the Orient where he managed various hotels and other establishments, presided the Hoteliers Commission of Thailand etc. Back in Switzerland, he has been heading a group of hotels which he co-owned. He is deeply interested in solar energy and electrical propulsion. After leaving politics in Switzerland, Philippe has based himself in Thailand, and fully owns PMG Shipyard.



## EQUIPMENT AND MATERIALS

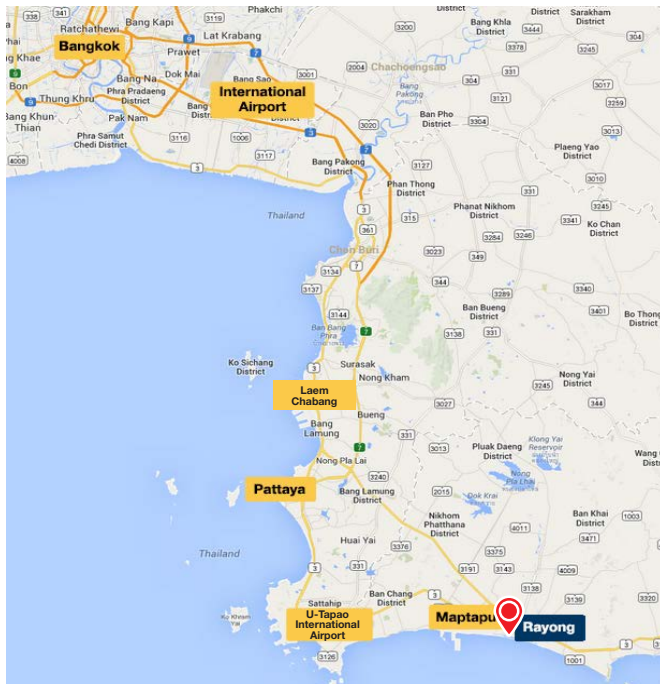
Much of our tools and equipment are custom-made for us in order to handle large catamarans.

This includes our most recent acquisition is a 3 x 8 metre CNC router for high precision fast cutting, as well as our extra wide travel lift and specially designed launching trailer.

Materials and components for the boats are sourced from quality suppliers worldwide to help ensuring a high quality end product. Strict ordering and logistics routines are in place to avoid production delays, and we keep vital components in stock at our well organised warehouse.







## LOCATION

PMG Shipyard is located directly on the beach in the city of Rayong, Thailand, only minutes away from the deep sea port at Map Ta Put Industrial Estate. 30 minutes from the shipyard is U-Tapao Pattaya International Airport while Pattaya with Ocean Marina Yacht Club, the largest yacht club in Southeast Asia, can be reached by car in 60 minutes. The deep sea port of Laem Chabang, from where most of our yachts are shipped, is 90 minutes away by car. It takes 2 hours on the motorway to go to Suvarnabhumi International Airport in Bangkok, and another half hour to downtown Bangkok.

A high-speed railway connecting Rayong to most of the above locations is under construction and will reduce the travel time to Bangkok to around one hour.



For enquiries and information please contact:  
Philippe M. Guenat,  
[info@pmgshipyard.com](mailto:info@pmgshipyard.com)

PMG SHIPYARD CO., LTD.  
5/7 Moo 4, T. Nuen Pra, A. Muang, Rayong,  
21150 THAILAND. Tel. +66 38 010 570

[www.pmgshipyard.com](http://www.pmgshipyard.com)

