



THE HELIOTROPE 80

Explorer Superyacht

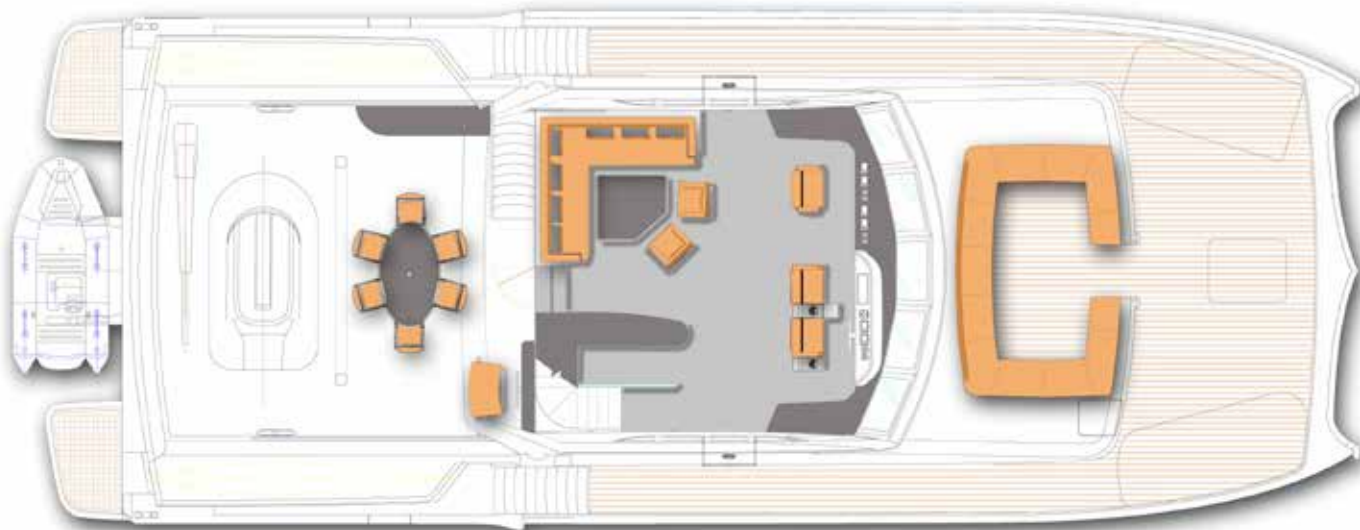
Bakricono along with Albatross Marine Design achieved excellence in design, timeless classic lines and a finish that meets the highest requirements on luxury yachts. By always striving to find a perfect balance of comfort and practicality, relying on advance technology and technical construction that allows for greater safety at sea for sailing in oceans all over the world. As part of BakriCono’s superyacht range of yachts, the Heliotrope 80 is extendable to 90’ & 100’ adding an additional two / four guest cabins.



Exterior styling

General Specifications

Overall length:	23.90 m / 78.41 ft.
Overall beam:	10.00 m / 32.80 ft.
Draught (Max):	1.06 m / 3.48 ft.
Air Draft:	6.20 m / 20.34 ft.
Displacement (MOC):	64,000 kg / 141,095 lbs.
Displacement (LDC):	80,000 kg / 176,369 lbs.
Standard Engines:	2 x 882 kW / 1,200hp
Maximum speed at MOC:	25 kts
Maximum speed at LDC:	22 kts
Recommended cruising speed:	12-16 kts
Maximum Range:.....	3,000 NM
Fresh water:	3,000 L / 792 US gal (+/-)
Diesel:	8,000 L / 2,113 US gal (+/-)
Grey water tanks:.....	500 L / 132 US gal (+/-)
Black water tanks:	500 L / 132 US gal (+/-)
CE Certification:	Category A - 14 People
Architect:	Albatross Marine Design
Builder:	Bakricono Shipyard



Flybridge

Overview of the vessel

- 2x V8-1200 hp Diesel engines with shaft drive, electronic control, propellers and hydraulic steering system
- Woodwork using certified Teak, White Oak and Asian Mahogany
- Saloon and Cabins with solid teak parquet flooring
- Marine vinyl ceilings and skirting
- Choice of upholstery with Quick dry foam cushions & bed mattress throughout the yacht
- Personalized metallic hull color

Wheel House

- Area: 42 m
- Main Helm Station
- Instrument console with engine instruments and all systems monitoring
- 3x Touch control interface with Radar, GPS/Chartplotter
- Autopilot
- HD Structure Scan
- Eco Sounder with alarm
- Speed and Distance Log
- Digital engine interface panel
- VHF/AIS
- Satellite Communication (Phone & Data connection)
- Complete high quality analog gauges
- Analog compass
- Electronic Engine controls
- Rudder Position Indicator
- C-Zone interface display/control panel for controlling and monitoring all 24V & 220V systems
- Generator control panel
- Power Assisted Hydraulic steering
- Remote control for anchor winch with chain counter
- Two remote controlled search lights
- Fog horn with loud haler
- Red LED night running lights
- Bilge Pump running indicators
- 3 x Pilot seats
- Chart and book holder above pilot seat
- Clear toughened glass windshield with windscreen wipers and wash-down kit for unimpaired night vision
- Pantry with Minibar, Storage
- Sofa seating for 8 people
- Coffee table
- Doors to Port and Starboard side decks
- Natural timber laid floor

Upper Deck

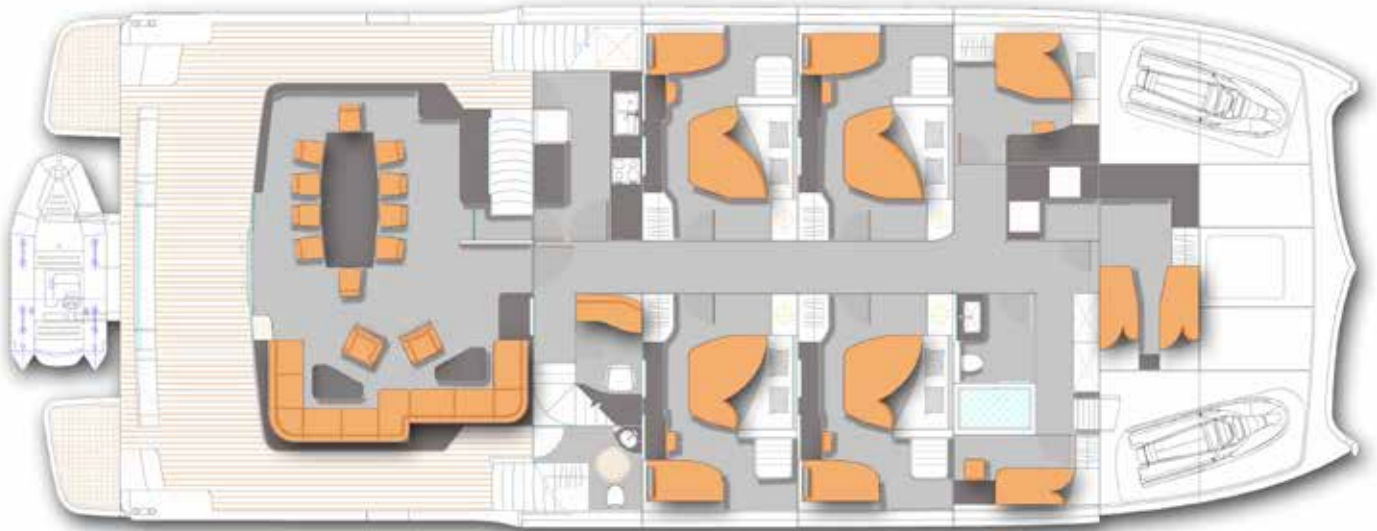
- Area: 43 m²
- Solid Teak decking
- Access to secondary Helm
- 6 people Dining Table
- 28 bottle Baumatic wine cooler
- Fridge & Wine Cooler
- BBQ
- Solid Surface counter tops
- Besenzoni davits for hoisting tender with 600kg lifting capacity
- Access to kayak storage rack
- Dim controlled LED lighting

Pantry

- Stainless steel sink with mixer tap
- Corian solid surface countertop
- Under counter storage locker
- AC power outlet socket
- Microwave Oven



View of Wheelhouse



Saloon & Cabins

Deck Arrangements

- Solid, natural Teak Deck
- Access to Corridor (Crew area)
- 12 person Sofa with 2 tables
- Access to Jet Ski Storage
- 63kg Delta anchor with 90m Chain
- Lewmar anchor windlass
- 18 underwater LED ambiance lights.
- 42 LED ambiance lights throughout deck
- Bollard Cleats
- Fender Storage hatches
- Besenconi Foldable Davits/Cranes in Jetski compartments
- Freshwater deck and Anchor wash
- 316 L Stainless Steel handrail, Bow roller, Cleats
- Full set HELLA Marine navigation lights
- Hydraulic swim platform with 500kg lifting capacity

Galley

- 12mm Solid timber decking
- Corian solid surface counter top
- Electric Induction Stove 4-Zone
- Oven with Grill
- 23-liter ice maker
- Ecolab dishwasher with 3min cycle time
- Kitchen Extraction Hood over cooking space
- Multi door Refrigerator/Freezer (400 liters)
- Five dual power socket emplacement
- Double Stainless Steel sink with Pull Out Mixer Tap
- High storage cabinet, Under counter storage, soft closing drawers

Saloon

- Area: 38 m2
- 180 Degree Panoramic view
- Solid handcrafted Natural timber deck 12 mm thickness (Customer preference for wood)
- TV cabinet
- Sofa seating for 12 people
- Handcrafted, Custom made Dining table for 10
- Display cabinet
- 24 LED down lights
- Full service bar with 36 bottle wine cooler
- Integrated WiFi system
- Multi-zone air conditioning
- Stainless Steel Framed Windows and Aft Door to Cockpit
- Blinds / Curtains on windows
- Surround sound entertainment system
- LED dim controlled down lights
- LED dim controlled floor courtesy

Party/Crew Toilet

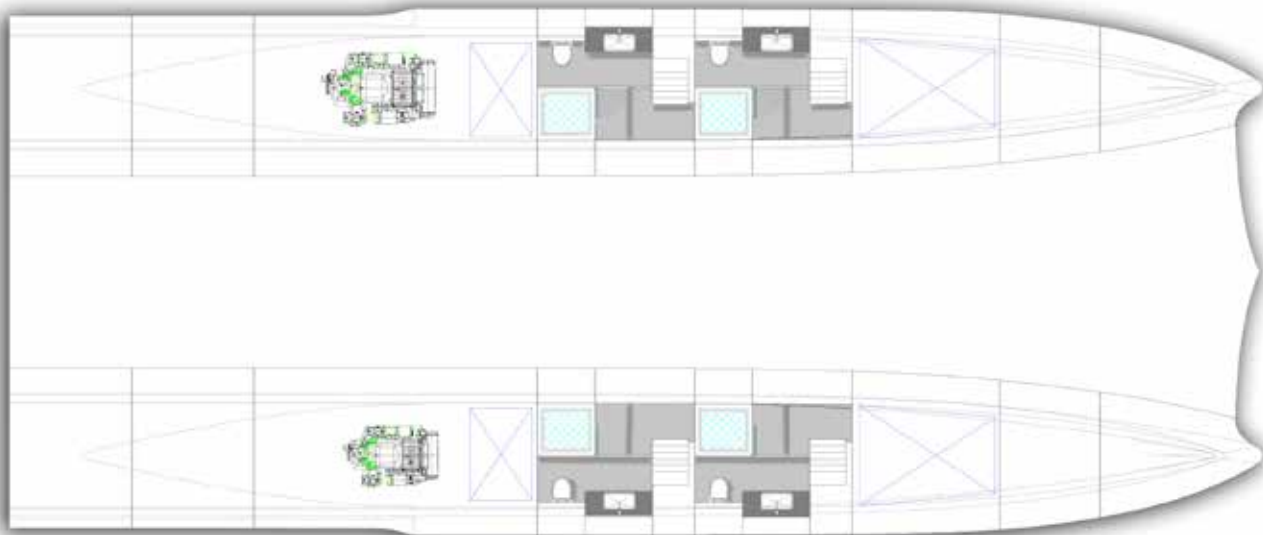
- 12 mm handcrafted solid timber deck
- Marine electric toilet
- Wash basin with mixer tap
- Enclosed shower
- Under sink storage



View of Saloon



View of Wheelhouse Lounge



Engines, bathroom and water line

Master cabins - 4 Each

Cabins

- 12 mm handcrafted solid timber decking
- Area: 19.6 m2 (include toilet)
- 3 meter wide window for ocean view
- King size bed
- 42" Full HD Smart TV, with home Theater
- Sofa seating
- 2 Marine Fans
- Storage space under bed and Sofa
- Hanging locker with inside drawers
- Vanity table with mirror
- Individual air-conditioning
- Custom designed interior decoration
- Full width room window
- Window Blinds / Curtains
- Private safe box
- Dim controlled LED lighting

En-suite shower and toilets

- Uniquely located in hulls, bellow cabin
- Electric flush toilet
- Enclosed shower with adjustable mixer tap
- Washbasin with mixer taps
- Under counter storage compartments
- Concealed waste bin
- Shampoo and sundries shelf in shower
- Customized mosaic tiling reproducing cabin theme
- Customized effect finishing on painted surfaces
- Matching vanity mirror and towel holders
- Hair dryer
- 220V shaver socket

Captain's Cabin Port side

- Double bed
- 22" TV with entertainment center
- Hanging locker with inside drawers
- Private safe box
- Individual air-conditioning
- Window Blinds / Curtains
- Drawing table
- Dressing Mirror
- Marine Electronic Fan

Crew Cabin

- Two single beds
- TV with DVD player 19" full HD
- Hanging locker with inside drawers
- Private safe box
- Individual air-conditioning
- Dressing mirror
- Two marine electronic fan
- Storage Area

Steward Cabin

- Twin bunk beds
- TV with DVD player 19" full HD
- Hanging locker with inside drawers
- Private safe box
- Individual air-conditioning
- Dressing mirror
- Marine electronic fan
- Storage Area

Engine Compartments & Equipment

- 2 x V8-1200 CRM (882 kW/1200 HP - 2300 rpm) with ZF Reverse Gearbox, electronic shift/throttle controls
- 5 Blade C-Foil propellers for optimum efficiency, performance and comfort
- Shafts with stern tubes, couplings and dripless shaft seals
- Self-Supporting rudders with tubes and assemblies with hydraulic steering cylinders
- Fuel water separators
- Engine room insulated and soundproofed
- Continues duty, forced engine room ventilation
- Raw water strainers, with clear lids for easy inspection
- Water cooled exhaust system with Water lock for noise reduction and safety
- Integrally molded engine beds for strength and vibration bsorption
- Watertight engine room bulkheads
- Engines flexibly mounted
- Engine room lighting in all areas
- Cathode protection

Water system

- 2x Custom made Stainless steel fresh water tanks, total 2,000 liter (528 US gal)
- 4x 18 Liter per minute (237 GPH) automatic pressure pumps
- 4x water surge dampers
- Hot water calorifier
- Stern shower at swim platform
- Fresh water wash down at anchor compartment
- Low level water alarm through C-Zone
- Grey water tanks for shower and sinks
- Black water tanks for toilets
- Discharge managed through C-Zone
- Stainless steel deck fillers, discharge connectors and vents
- Water transfer between fresh water tanks
- 10 Automatic bilge pumps with manual override, integrated with C-Zone for control and monitoring

Fuel System

- 4x Custom made Stainless Steel fuel tanks, total 8,000 Liters (2,113 US gal)
- Stainless steel deck fuel fillers and breathers
- Fuel/water separators for added safety and ease of maintenance
- Remote fuel shut offs from outside engine room
- Fuel tank monitoring with C-Zone
- Fuel transfer between tanks, with easy operation through CZone

Fire Fighting & safety

- Dedicated space for canister life rafts
- Automatic engine compartment fire suppression system with engine shutdown, helm station alarms and manual release.
- Collision bulkheads in bow, and watertight engine compartments
- Keel with shoe for protecting propellers and rudder from nets, ropes and sea bottom.
- Smoke detectors in all areas with audible and visual alarm.

Electrical System

- C-Zone integration of all DC and AC Systems for control, monitoring and management
- Charger/Inverters fitted for power supply, management and distribution 24 Volt
- 3,000 Ah (75kWh) Mastervolt Li-Ion batteries
- Heavy duty batteries for engines and generator starting
- Battery isolation switches installed with remote operation at any C-Zone interface
- 24v to 12V converter for certain equipment 120 / 220 Volt
- 40 kW Cummins Onan water cooled generator with Sound Shield
- Mastervolt Mass Combi Ultra inverters
- 2x 64 Amp shore power connections and cables
- Generator / Shore power residual current devices
- Reverse Polarity protection
- AC power outlets in all cabins, toilets, galley, office, flybridge, engine rooms

Construction

- Multiaxial FRP Construction using Bisphenol A-type Epoxy Vinyl Ester resin for excellent resistance to corrosion, organic/ inorganic acids, alkalis, oxidizing chemicals and salt solutions, by infusion
- Isophthalic gelcoat for high color stability and osmosis resistance
- Vacuumed infused core sandwich
- Resin infused bulkheads
- Watertight collision bulkheads in forepeak for added safety
- Watertight engine room compartments
- High Quality Tempered Glass windows
- Marine Grade 316L Stainless Steel handrails, deck fittings and hardware

Additional items (Included)

- Owner's manual supplied
- Engine and equipment manuals
- Boat hook
- Tool kit
- Ship's document case
- Anti-Corrosive Epoxy primer for protection against Osmosis



Master / Guest Cabin



Master / Guest Cabin



Pilot House styling



Saloon styling